

Hippocampal sulcus remnant cysts



Case contributed by [Yuliia Solodovnikova](#)

● Diagnosis almost certain

+ Citation, DOI, disclosures and case data

Edit case ▾

Share

Add to ▾

⚙ ▾

Presentation

Asymptomatic.

Patient Data

Age: 45 years

Gender: Female

DCM

MRI



Sagittal
T1



Axial
T2



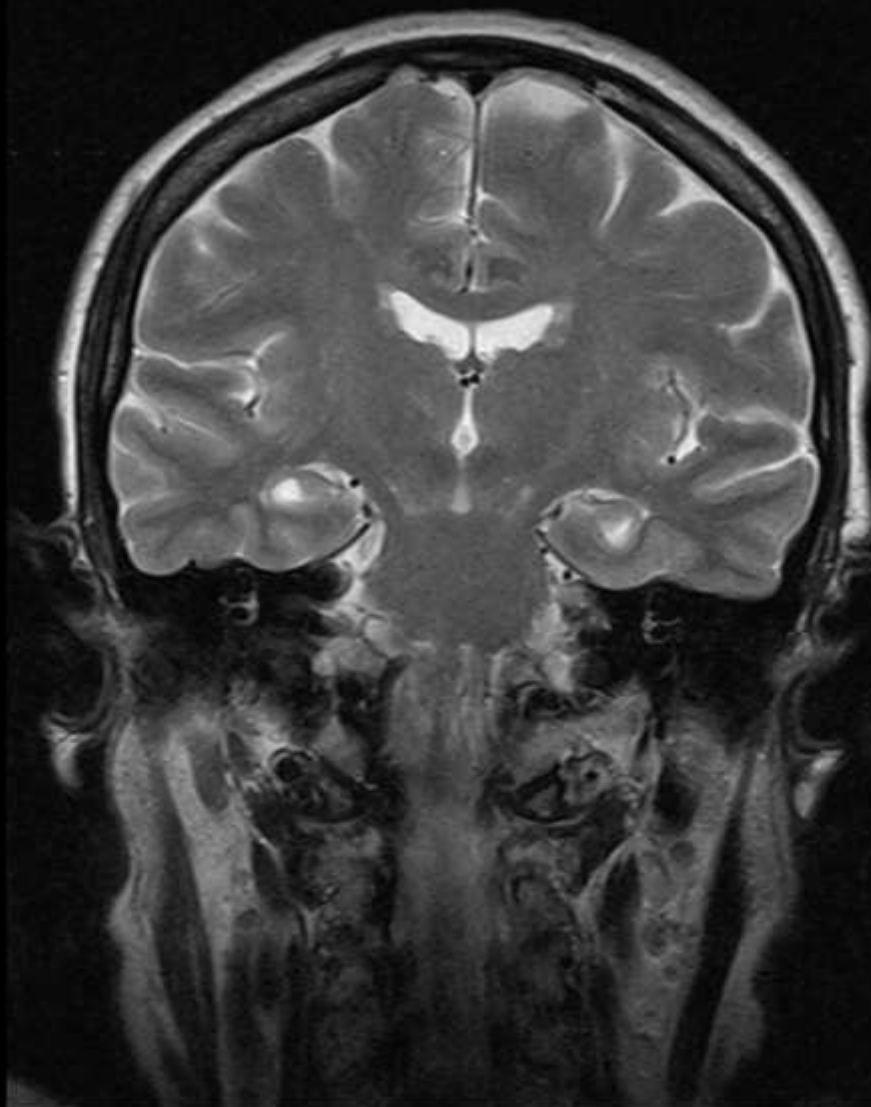
Axial
FLAIR



Coronal
T2



Coronal
T1 C+



Small cysts located between the dentate gyrus and the hippocampus proper, at the lateral aspect of the hippocampal region, near the apex of the hippocampal fold bilaterally.

Case Discussion

An incidental finding. Considered to be remnants of incomplete involution of the embryonic hippocampal fissure.