

ARTICLES  
(/ARTICLES)

CASES (/CASES)

COURSES  
(/COURSES)

PROFILE  
(/USERS/YULIIA-  
SOLODOVNIKOVA)



Introduction to oncology  
staging CT  
Sally Ayesa



(<https://radiopaedia.org/courses/featured-video>)

# Subacute combined degeneration of the cord



Case contributed by Yuliia Solodovnikova (/users/yuliia-solodovnikova)  
Diagnosis certain

Edit case

Share (/cases/subacute-combined-degeneration-of-the-cord-10)

Add to

## × Citation, DOI, disclosures and case data


### Citation:

Solodovnikova Y, Subacute combined degeneration of the cord. Case study, Radiopaedia.org (Accessed on 13 Jun 2023)  
<https://doi.org/10.53347/rID-163650>

### DOI:

<https://doi.org/10.53347/rID-163650> (<https://doi.org/10.53347/rID-163650>)

### Permalink:

MENU  (/) <https://radiopaedia.org/cases/163650>  
(<https://radiopaedia.org/cases/163650>)

SEARCH

### rID:

163650

**Disclosures:**

At the time the case was submitted for publication Yuliia Solodovnikova had no financial relationships to ineligible companies (</articles/disclosures>) to disclose.



View Yuliia Solodovnikova's current disclosures (</users/yuliia-solodovnikova>)

**Case created:**

1 Mar 2023

**Case published:**

4 Mar 2023

**Revisions:**

7 times, by 2 contributors - see full revision history and disclosures (</cases/subacute-combined-degeneration-of-the-cord-10/revisions>)

**Systems:**

Central Nervous System (</articles/section/all/central-nervous-system>)

**Quiz mode:**

Included

---

**Presentation**

The patient was suspected to have prostate cancer because of urinary retention. Additional symptoms included progressing weakness in low extremities, weight loss of calf muscles, sensitive ataxia, toes hypoalgesia, and fatigue. Eventually, hypoalgesia expanded to knee level. The original diagnosis was low extremities polyneuropathy with impairment of reflective and neurotrophic function. Treated with anticholinergic medications with no effect.

**Patient Data**

**Age:** 70 years

Gender: Male

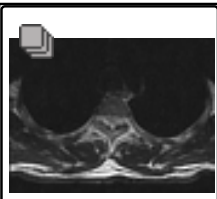
MRI

(/cases/163650/studies/133214)



Axial T2

(/images/61413  
122?  
case\_id=163650  
)



Axial T2

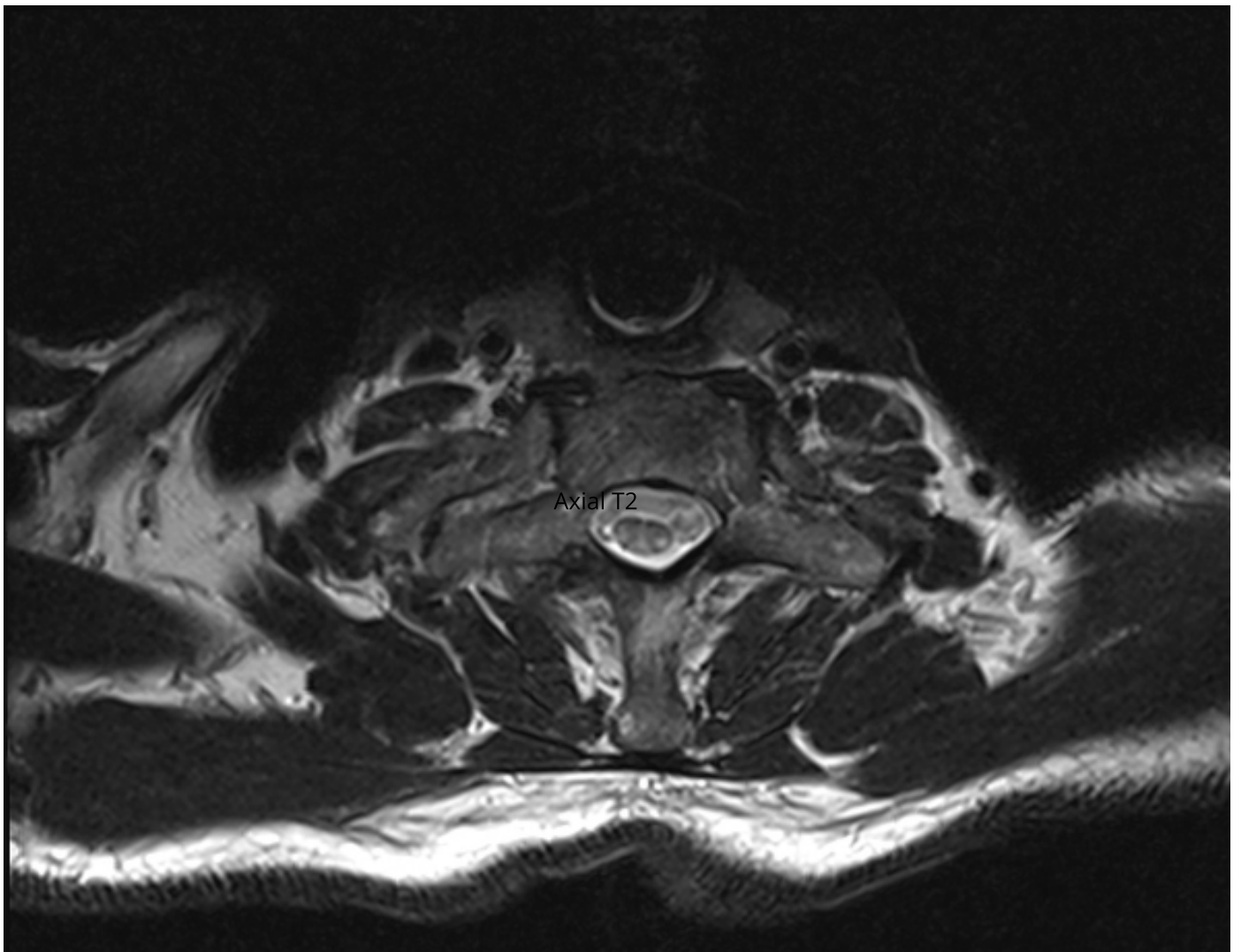
(/images/61413  
159?  
case\_id=163650  
)



Axial T2

(/images/61413  
123?  
case\_id=163650  
)

MRI



+ 1 case question available

## Case Discussion



Based on the history and neurological examination data a wide differential diagnosis of Guillain–Barré syndrome, acute inflammatory demyelinating polyneuropathy, distal mononeuropathy, paraneoplastic polyneuropathy, systemic vasculitis with periphery nervous system damage, and inherited polyneuropathy as considered.

Retrospective analysis of the patient's data demonstrated anaemia (haemoglobin 109 g/l) and atrophic gastritis. He was also B12 deficient (56,94 pg/ml).

Considering quite specific MRI changes the final diagnosis was subacute combined degeneration of the cord (</articles/subacute-combined-degeneration-of-the-cord-1>) due to severe B12 deficiency.

This case shows the importance of suspicion of this entity in patients with B12-anaemia, polyneuropathy-like manifestations, weight loss and atrophic gastritis and the importance of imaging.

---

+ 2 public playlists include this case

### × Related Radiopaedia articles

- [Subacute combined degeneration of the cord \(</articles/subacute-combined-degeneration-of-the-cord-1>\)](/articles/subacute-combined-degeneration-of-the-cord-1)

---

× **Promoted articles** (advertising)

Regional landscape transformation and sustainability of the rural homegarden agroforestry system in the Chengdu Plain, China

ZHOU Lian et al., *Regional Sustainability*, 2022



Digital mapping of soil salinization based on Sentinel-1 and Sentinel-2 data combined with machine learning algorithms

Guolin MA et al., *Regional Sustainability*, 2021

A big-data approach for investigating destination image gap in Sanya City: When will the online and the offline goes parted?

Lingkun Meng et al., *Regional Sustainability*, 2021

Using Virtual Reality Head-Mounted Displays to Assess Skills in Emergency Medicine: Validity Study

Marie Høxbro Knudsen et al., *J Med Internet Res*, 2023

Clinical Diabetes Video Series: Optimizing the Use of Glucagon-Like Peptide 1 Receptor Agonists in Type 2 Diabetes

John Anderson et al., *Clinical Diabetes*

Video Series: Optimizing the Use of GLP-1RAs in Type 2 Diabetes

John Anderson et al., *Clinical Diabetes*

---

Powered by **TREND MD**

I consent to the use of Google Analytics and related cookies across the TrendMD network (widget, website, blog). [Learn more \(https://www.trendmd.com/google-analytics#\)](https://www.trendmd.com/google-analytics#)

**Yes**

**No**

**Case completeness**

95% complete. Why not add:

Diagnostic certainty

Patient's presentation

Patient data

Study findings

Case discussion

MRI image sequences

Modality

Related articles

A couple of questions and answers



### How to use cases

You can use Radiopaedia cases in a variety of ways to help you learn and teach.

- Add cases to playlists (</articles/playlists>)
- Share cases with the diagnosis hidden (</articles/sharing-cases-and-playlists>)
- Use images in presentations (</articles/using-and-attributing-images-from-radiopaedia>)
- Use them in multiple choice question (</articles/image-interpretation-questions>)

Creating your own cases is easy.

- Case creation learning pathway (</courses/help-creating-cases>)



## Articles (/articles/section/all/all)

### By Section:

Anatomy

(/articles/section/anatomy/all)

Approach

(/articles/section/approach/all)

Artificial Intelligence

(/articles/section/artificial-intelligence/all)

Classifications

(/articles/section/classifications/all)

Gamuts

(/articles/section/gamuts/all)

Imaging Technology

(/articles/section/physics/all)

Interventional Radiology

(/articles/section/interventional-radiology/all)

Mnemonics

(/articles/section/mnemonics/all)

## Cases (/cases)

Breast (/cases/system/breast)

Cardiac (/cases/system/cardiac)

Central Nervous System

(/cases/system/central-nervous-system)

Chest (/cases/system/chest)

Forensic (/cases/system/forensic)

Gastrointestinal

(/cases/system/gastrointestinal)

Gynaecology

(/cases/system/gynaecology)

Haematology

(/cases/system/haematology)

Head & Neck

(/cases/system/head-neck)

Hepatobiliary

(/cases/system/hepatobiliary)

Interventional

(/cases/system/interventional)

Pathology  
(/articles/section/pathology/all)

Radiography  
(/articles/section/radiography/all)

Signs (/articles/section/signs/all)

Staging  
(/articles/section/staging/all)

Syndromes  
(/articles/section/syndromes/all)

### **By System:**

Breast (/articles/section/all/breast)

Cardiac  
(/articles/section/all/cardiac)

Central Nervous System  
(/articles/section/all/central-nervous-system)

Chest (/articles/section/all/chest)

Forensic  
(/articles/section/all/forensic)

Gastrointestinal  
(/articles/section/all/gastrointestinal)

Gynaecology  
(/articles/section/all/gynaecology)

Haematology  
(/articles/section/all/haematology)

Head & Neck  
(/articles/section/all/head-neck)

Hepatobiliary  
(/articles/section/all/hepatobiliary)

Musculoskeletal  
(/cases/system/musculoskeletal)

Obstetrics  
(/cases/system/obstetrics)

Oncology  
(/cases/system/oncology)

Paediatrics  
(/cases/system/paediatrics)

Spine (/cases/system/spine)

Trauma (/cases/system/trauma)

Urogenital  
(/cases/system/urogenital)

Vascular (/cases/system/vascular)

Not Applicable  
(/cases/system/not-applicable)

### **Radiopaedia.org (/)**

**ABOUT (/ABOUT)**

**BLOG (/BLOG)**

**FEATURE SPONSOR (/FEATURE-SPONSOR)**

**DONATE (/SUPPORTERS)**

Editors (/editors)

Expert advisers (/expert-advisers)

Help (/articles/style-guide-and-help)





Interventional  
(/articles/section/all/interventional)

Musculoskeletal  
(/articles/section/all/musculoskeletal)

Obstetrics  
(/articles/section/all/obstetrics)

Oncology  
(/articles/section/all/oncology)

Paediatrics  
(/articles/section/all/paediatrics)

Spine (/articles/section/all/spine)

Trauma  
(/articles/section/all/trauma)

Urogenital  
(/articles/section/all/urogenital)

Vascular  
(/articles/section/all/vascular)

 Facebook  
(https://www.facebook.com/Radiopaedia)

 Twitter  
(https://twitter.com/Radiopaedia) 

 Newsletter  
(http://eepurl.com/ltOWf)

---

[Contact Us \(/contact\)](/contact)

[Terms of Use \(/terms\)](/terms)

[Privacy Policy \(/terms#privacy-policy\)](/terms#privacy-policy)

[Licensing \(/licence\)](/licence)

[Sponsorship \(/sponsorship\)](/sponsorship)

[Developers \(/developers\)](/developers)

© 2005–2023 Radiopaedia.org